



NEW

**DP-20**

Diagnostic Ultrasound System

**Converting Desires into Reality**

**mindray**  
healthcare within reach

# DP-20

## Diagnostic Ultrasound System

With added smartness, DP-20 is an ideal choice for an entry-level B/W system providing you with best-in-class combination of performance and cost. With a new platform, based on Intel's powerful processor, DP-20 forms an integral part of Mindray's new generation of portable B/W ultrasound system, equipped with latest imaging technologies and convenient workflow operations.



### Ergonomic Mobile Design

- High resolution 12.1" LED with tilt functionality
- User-friendly keyboard and controls
- Only 5.1 kg. Take it to your patients.

### Advanced Imaging Technology

- Tissue Harmonic Imaging (THI) for enhanced contrast resolution
- 8-segment TGC allowing delicate image adjustment
- iClear for Speckle Reduction Imaging, providing clear and sharp lesion contours

### Powerful Workflow

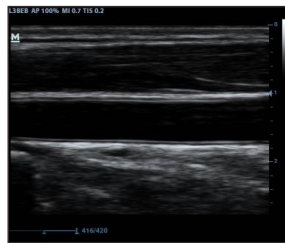
- iStation for integrated patient data storage allowing you to archive, review and retrieve data efficiently
- iStorage for instant images and reports transfer to PC
- Lithium-ion Battery
- 320G hard disk

### Clinical Versatility

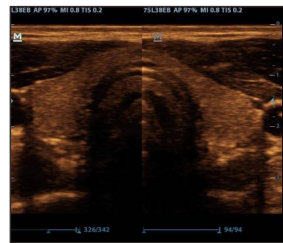
- A broad range of transducers with abundant measurement packages covering traditional ultrasound applications and emerging fields including urology, MSK and anesthesia



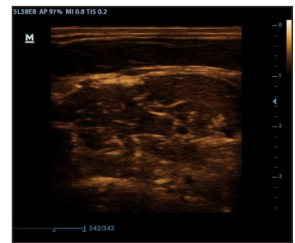
Liver



Carotid



Whole Thyroid with Dual Mode



Brachial Plexus

Mindray Building, Keji 12th Road South,  
High-tech Industrial Park, Nanshan, Shenzhen 518057, P.R. China  
Tel: +86 755 8188 8998 Fax: +86 755 26582680  
E-mail: intl-market@mindray.com www.mindray.com

Mindray is listed on the NYSE under the symbol "MR"

mindray is a trademark of Shenzhen Mindray Bio-Medical Electronics Co., Ltd.

© 2013 Shenzhen Mindray Bio-Medical Electronics Co., Ltd. All rights reserved. Specifications subject to changes without prior notice.

P/N: ENG-DP20-210285x2p-20130628



**mindray**